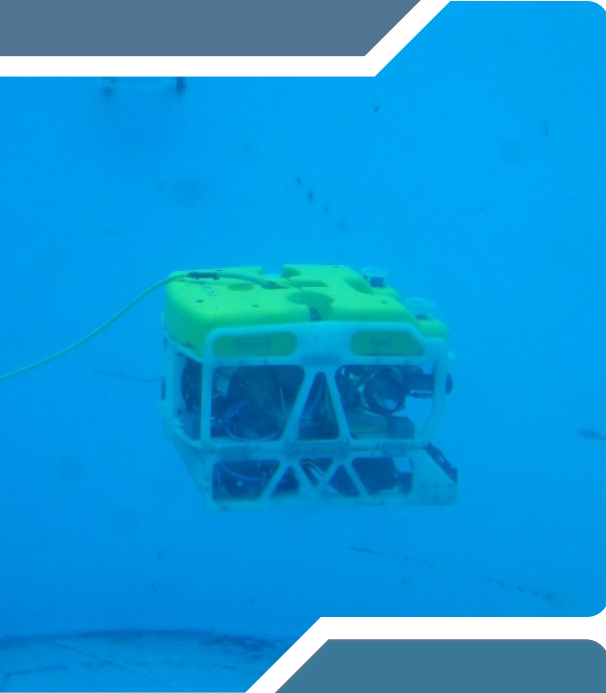


# Seaeye Lynx

OBSERVATION-CLASS ROV

i-Tech<sup>7</sup>



The Seaeye Lynx is widely considered the leading observation and inspection class ROV in the oil and gas industry, with excellent handling and maneuverability even in strong currents and harsh conditions.

Rated up to 1,500 metres, The Seaeye Lynx is ideally suited for inspection programmes requiring light intervention and can also be utilised alongside a work-class ROV during drill-support programmes.

i-TECH

PRODUCT OVERVIEW

- 250m depth rating
- 37kg payload capability
- High resolution camera that can be tilted 90 degrees
- Weight in air 200kg
- Optional 4-function manipulator
- Designed & built by industry-leading observation class system manufacturer, Saab Seaeye
- Garage tether management system or free swimming modes
- Variable intensity 600W lighting
- Gravity based deployment for platform or jack-up operations to 300m

# Specifications

## DIMENSIONS & WEIGHTS

Length	1,260mm
Width	815mm
Height	605mm
Weight in Air	200kg
Payload	37kg
Depth Rating	up to 1,500msw

## PROPULSION SYSTEM

Forward	69kgf
Vertical	39kgf
Lateral	45kgf
Thruster configuration:	Four horizontal vectored, two vertical

## LIGHT OUTPUT (available)

600W

## VIDEO SYSTEM

Recording Format	DVD
Dual video channels switched	
Video transmission via balanced line driver and screen twisted pair	

## CONTROL SENSORS

Heading Control	±0.5 degrees
Depth Control	±0.1 degrees
Auto heading	
Auto depth	

## TETHER MANAGEMENT SYSTEM

TMS	
Seaeye Type 8 TMS	
Depth Rating	250m
Tether Capacity	250m
Depth	1.75m
Width	1.49m
Height	1.83m
In Air Weight (without ROV)	810kg

For further information contact: [i-techproposals@subsea7.com](mailto:i-techproposals@subsea7.com)